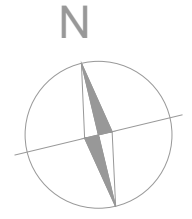
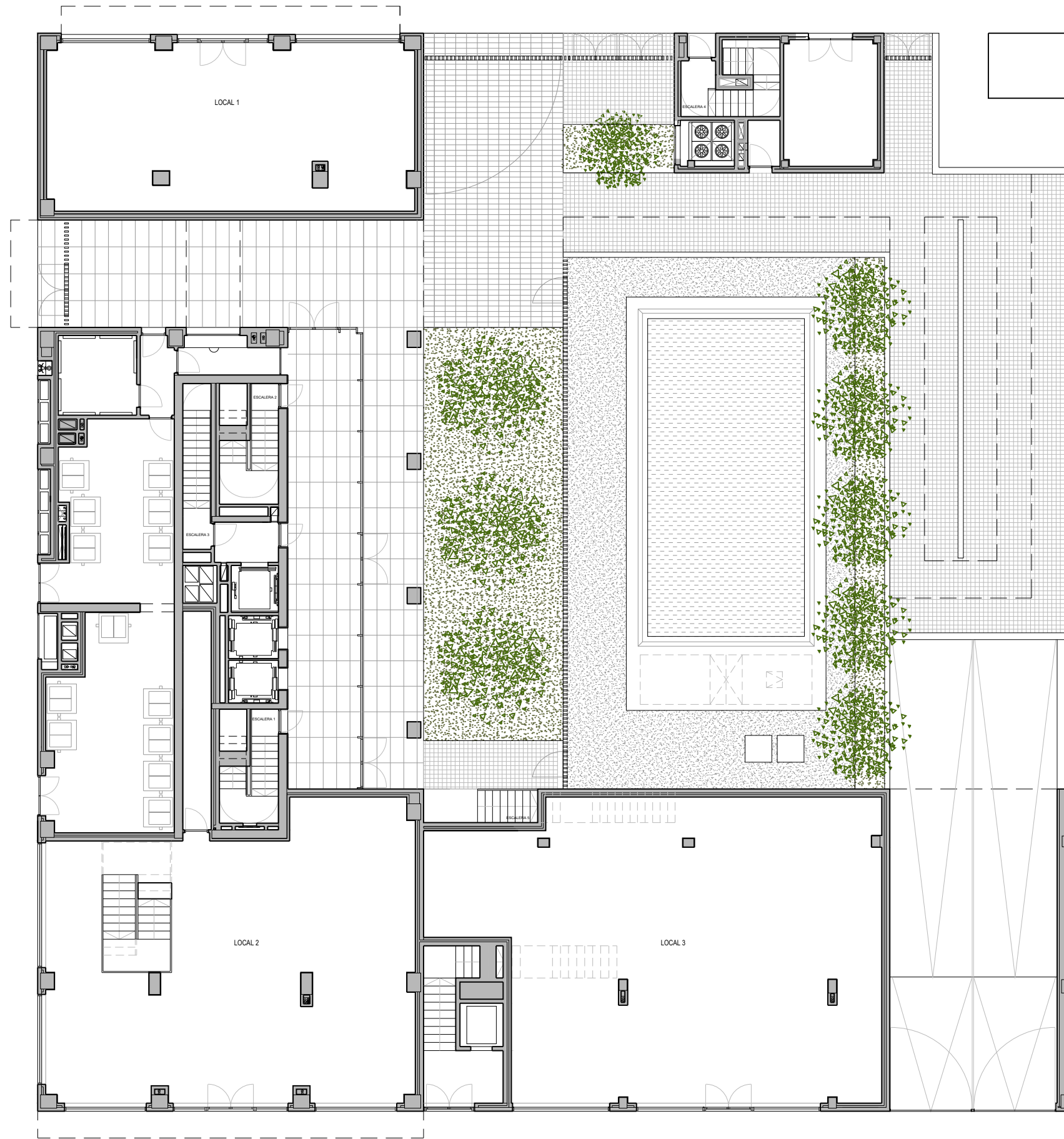


PLANTA BAJA

LOCAL 1		
SUPERFICIE ÚTIL	_____	85,20 m ²
LOCAL 2		
SUPERFICIE ÚTIL	_____	269,39 m ²
LOCAL 3		
SUPERFICIE ÚTIL	_____	167,45 m ²



Escala gráfica
0 1 2 3 4 5m

Managed by: