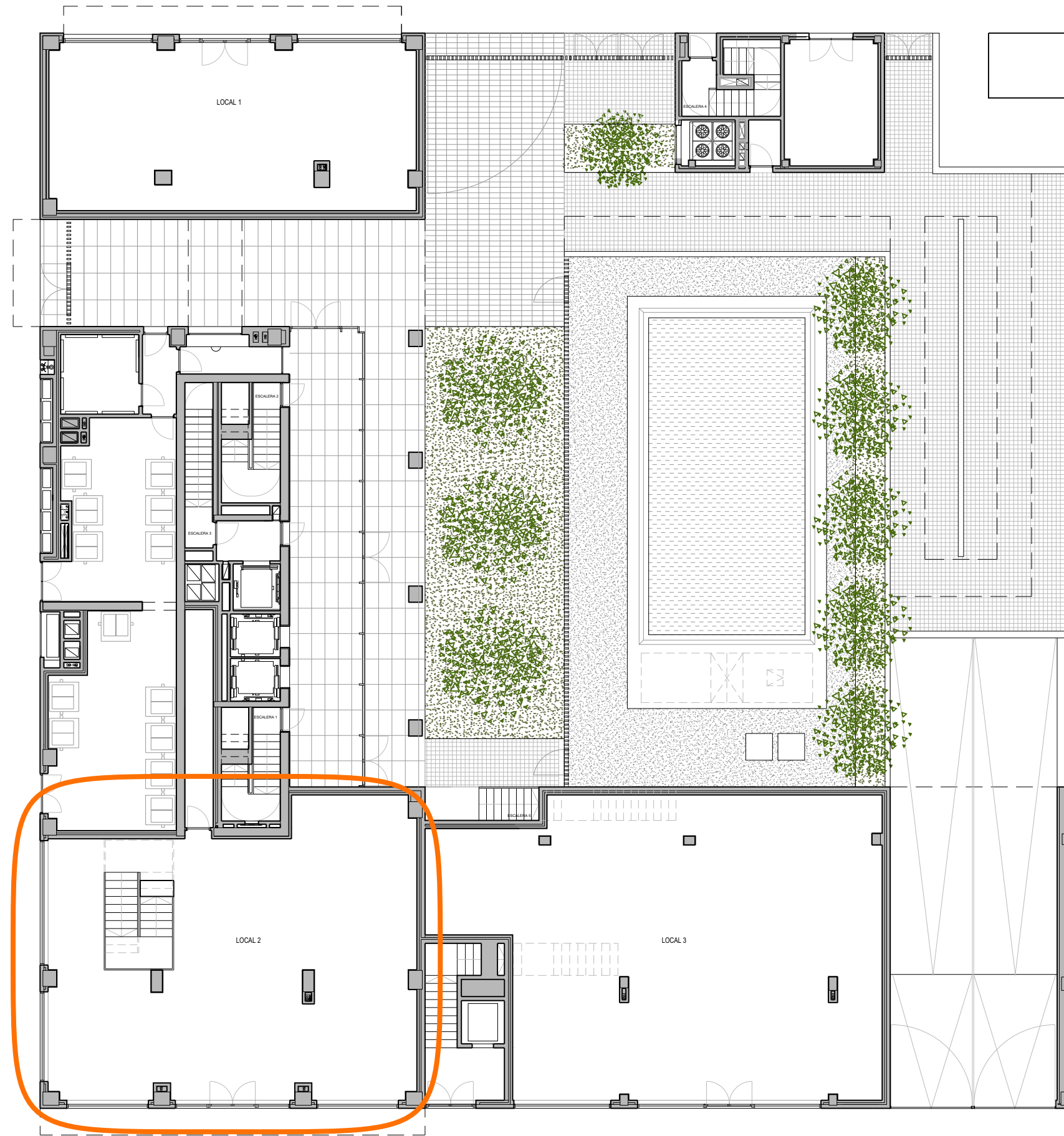
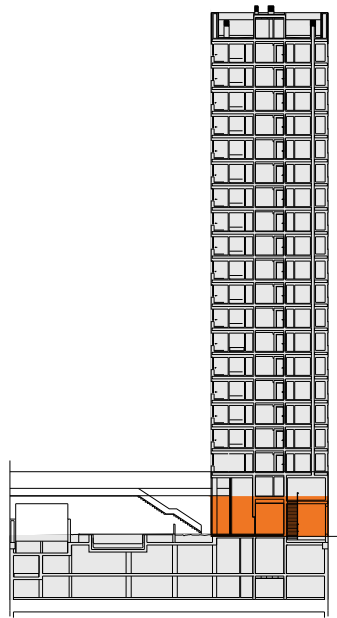


PLANTA BAJA

LOCAL 2
SUPERFICIE
CONSTRUIDA _____ 166,13 m²

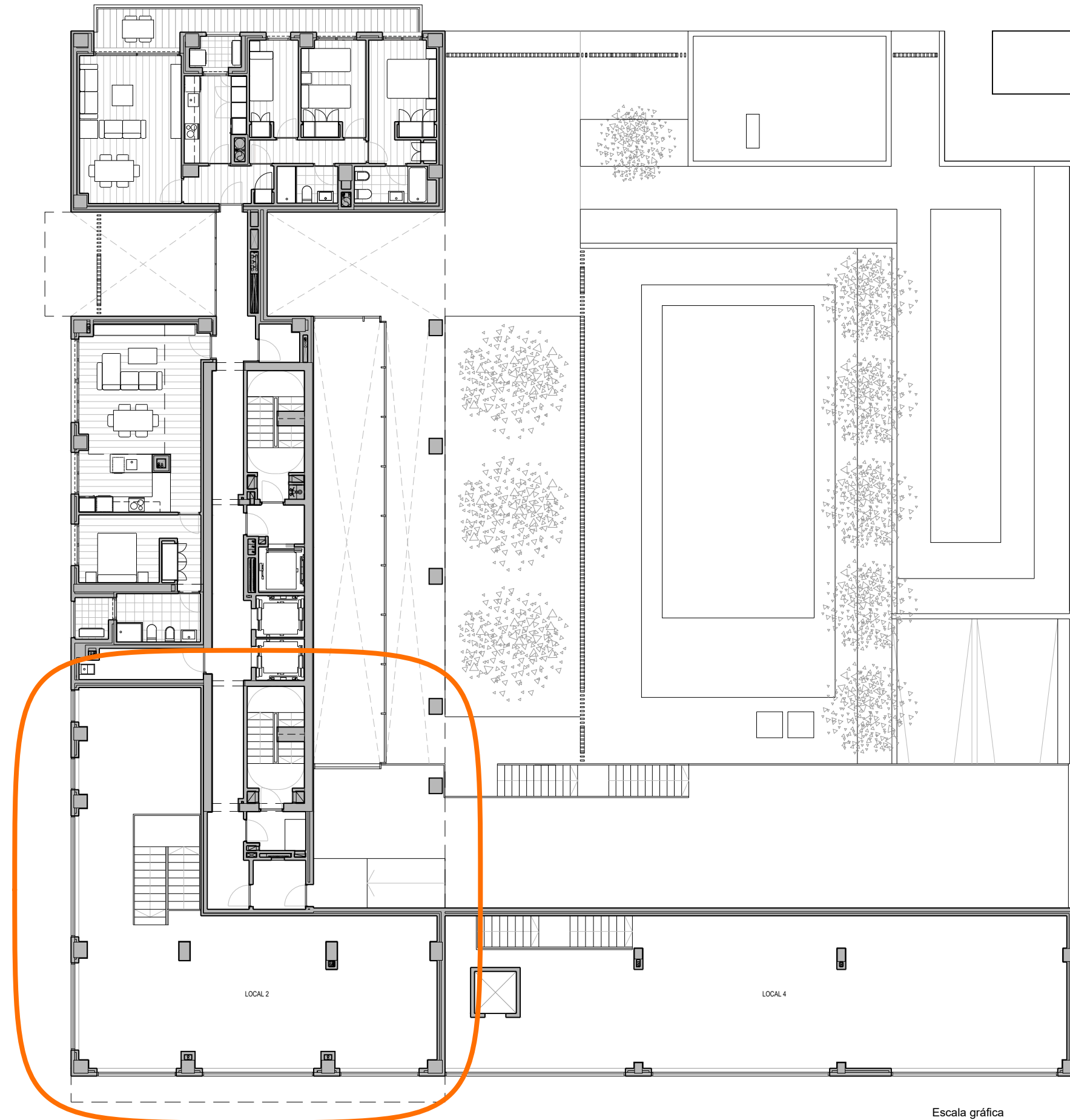


Escala gráfica
0 1 2 3 4 5m

Managed by:

PLANTA PRIMERA

LOCAL 21
 SUPERFICIE
 CONSTRUIDA 135,73 m²



Escala gráfica
 0 1 2 3 4 5m

Managed by: